



**Government of India**  
**Ministry of Earth Sciences**



**India Meteorological Department**

**PRESS RELEASE-6**

**Time of issue: 1430 hours IST**

**Dated: 29<sup>th</sup> November, 2024**

**Sub: Deep Depression over Southwest Bay of Bengal (Cyclone Alert: Orange Message for North Tamil Nadu, Puducherry and adjoining south Andhra Pradesh Coasts)\***

Yesterday's **Deep Depression** over Southwest Bay of Bengal moved nearly northwards and lay centred at 0830 hours IST of today, the 29th November 2024 over the same region near latitude 10.6°N and longitude 82.6°E, about 270 km north-northeast of Trincomalee, 300 km east of Nagappattinam, 340 km east-southeast of Puducherry and 380 km southeast of Chennai.

It is likely to move northwestwards and intensify into a **cyclonic storm** during next 06 hours. Thereafter, it is likely to continue to move northwestwards and cross north Tamil Nadu-Puducherry coasts between Karaikal and Mahabalipuram close to Puducherry as a cyclonic storm with a wind speed of 70-80 kmph gusting to 90 kmph during afternoon 30th November.

The system is being continuously monitored.

Forecast track and intensity are given in the following table:

<b>Date/ Time (IST)</b>	<b>Position (Lat. °N/ long. °E)</b>	<b>Maximum sustained surface wind speed (Kmph)</b>	<b>Category of cyclonic disturbance</b>
29.11.24/0830	10.6/82.6	55-65 gusting to 75	Deep Depression
29.11.24/1130	10.7/82.4	55-65 gusting to 75	Deep Depression
29.11.24/1730	11.0/81.9	60-70 gusting to 80	Cyclonic Storm
29.11.24/2330	11.3/81.2	65-75 gusting to 85	Cyclonic Storm
30.11.24/0530	11.7/80.4	70-80 gusting to 90	Cyclonic Storm
30.11.24/1730	12.2/79.3	55-65 gusting to 75	Deep Depression

**Warnings:**

**(i) Rainfall Warning:**

**Tamil Nadu & Puducherry:** Light to moderate rainfall at many places with heavy to very heavy rainfall with extremely falls at isolated places over north Tamil Nadu – Puducherry is likely on 29<sup>th</sup> November; heavy to very heavy rainfall at a few places and extremely heavy rainfall at isolated places over north Tamil Nadu – Puducherry on 30<sup>th</sup> November; heavy to very heavy rainfall at isolated places over interior Tamil Nadu on 01<sup>st</sup> December, and heavy rainfall at isolated places over Tamil Nadu on 02<sup>nd</sup> and 03<sup>rd</sup> December.

**Coastal Andhra Pradesh:** Light to moderate rainfall at many places with heavy to very heavy rainfall at isolated places is likely over south coastal Andhra Pradesh on 29<sup>th</sup> November; heavy to very heavy

**Contact:** Cyclone Warning Division, Office of the Director General of Meteorology, India Meteorological Department, Ministry of Earth Sciences, E-mail: cyclonewarningdivision@gmail.com, Website: [rsmcnewdelhi.imd.gov.in](http://rsmcnewdelhi.imd.gov.in), Spatial rainfall distribution: Isolated: <25%, A few: 26-50%, Many: 51-75%, Most: 76-100%, Rainfall amount (mm): Heavy rain: 64.5 – 115.5, Very heavy rain: 115.6 – 204.4, Extremely heavy rain: 204.5 or more.

rainfall with extremely heavy rainfall at isolated places over south coastal Andhra Pradesh on 30<sup>th</sup> November, and heavy rainfall at isolated places on 01<sup>st</sup> December.

**Royalaseema:** Light to moderate rainfall at many places with heavy to very heavy rainfall with extremely heavy rainfall at isolated places is likely on 29<sup>th</sup> & 30<sup>th</sup> November; heavy rainfall at isolated places on 01<sup>st</sup> December.

**South interior Karnataka:** Light to moderate rainfall at many places with isolated heavy rainfall is likely on 30<sup>th</sup> November, heavy to very heavy rainfall at isolated places on 01<sup>st</sup> & 2<sup>nd</sup> December.

**Kerala:** Light to moderate rainfall at many places with isolated heavy rainfall is likely on 30<sup>th</sup> November, heavy to very heavy rainfall at isolated places on 01<sup>st</sup> & 2<sup>nd</sup> December.

**(ii) Wind warning:**

- **Southwest Bay of Bengal:** Squally wind speed reaching 55-65 kmph gusting to 75 kmph is prevailing over southwest Bay of Bengal. It is likely to increase becoming Gale wind speed reaching 60-70 kmph gusting to 80 kmph from evening of 29<sup>th</sup> and 70-80 kmph gusting to 90 kmph by morning of 30<sup>th</sup> November. Thereafter, it is likely to decrease becoming 55-65 kmph gusting to 75 kmph by evening of 30<sup>th</sup> November.
- **Adjoining areas of westcentral Bay of Bengal:** Squally wind speed reaching 50-60 kmph gusting to 70 kmph is likely to prevail over adjoining areas of westcentral Bay of Bengal till evening of 30<sup>th</sup> November. It is likely to decrease thereafter.
- **Along & off North Tamil Nadu – Puducherry and adjoining South Andhra Pradesh coasts:** Squally wind speed reaching 50-60 kmph gusting to 70 kmph is prevailing along & off **North Tamil Nadu - Puducherry and adjoining South Andhra Pradesh coasts**. It is likely to increase becoming Gale wind speed reaching 60-70 kmph gusting to 80 kmph from evening of 29<sup>th</sup> and 70-80 kmph gusting to 90 kmph from 30<sup>th</sup> November morning to evening of 30<sup>th</sup> November. It is likely to decrease thereafter.
- **Along & off East Sri Lanka coasts:** Squally wind speed reaching 55-65 kmph gusting to 75 kmph is very likely to prevail **Along & off East Sri Lanka coasts** till 29<sup>th</sup> November. It would decrease thereafter.
- **Along & off South Tamil Nadu coast and Gulf of Mannar:** Squally wind speed reaching 45-55 kmph gusting to 65 kmph is likely to prevail till 30<sup>th</sup> evening and gradually decrease thereafter.

**(iii) Sea condition:**

Rough to very Rough Sea conditions is very likely over southwest Bay of Bengal adjoining areas of westcentral Bay of Bengal, Gulf of Mannar and along & off Tamil Nadu-Puducherry, South Andhra Pradesh and East Sri Lanka coasts till afternoon of 30<sup>th</sup> November. It is likely to become very rough to high thereafter till 30<sup>th</sup> evening. It will gradually improve thereafter.

**(iv) Storm surge Warning:**

Storm surge of about 1 metre above the astronomical tide is likely inundate the low lying areas of the coastal districts of north Tamil Nadu, Puducherry and adjoining south Andhra Pradesh during the time of landfall.

**Contact:** Cyclone Warning Division, Office of the Director General of Meteorology, India Meteorological Department, Ministry of Earth Sciences, E-mail:[cyclonewarningdivision@gmail.com](mailto:cyclonewarningdivision@gmail.com), Website: [rsmcnewdelhi.imd.gov.in](http://rsmcnewdelhi.imd.gov.in), Spatial rainfall distribution: Isolated: <25%, A few: 26-50%, Many: 51-75%, Most: 76-100%, Rainfall amount (mm): Heavy rain: 64.5 – 115.5, Very heavy rain: 115.6 – 204.4, Extremely heavy rain: 204.5 or more.

**(v) Fisherman warning:**

- Total suspension of fishing operations.
- Fishermen are advised not venture into southwest Bay of Bengal adjoining areas of westcentral Bay of Bengal, Gulf of Mannar and along & off Tamil Nadu-Puducherry, South Andhra Pradesh and East Sri Lanka coasts till 30<sup>th</sup> November evening.
- Fishermen out at sea are advised to return to coast.

**(vi) Impact Expected [over coastal districts of north Tamil Nadu – Puducherry and adjoining south Andhra Pradesh]**

- Localized Flooding of roads, water logging in low lying areas and closure of underpasses mainly in urban areas of the above region.
- Occasional reduction in visibility due to heavy rainfall.
- Disruption of traffic in major cities due to water logging in roads leading to increased travel time.
- Minor damage to kutch roads.
- Damage to horticulture and standing crops in some areas due to inundation.
- Partial disruption of power and communication lines.
- Breaking of tree branches, uprooting of small trees including banana, papaya and drumstick.

**(vii) Action Suggested**

- Total suspension of fishing operations.
- Fishermen are advised not venture into southwest Bay of Bengal adjoining areas of westcentral Bay of Bengal, Gulf of Mannar and along & off Tamil Nadu-Puducherry, South Andhra Pradesh and East Sri Lanka coasts till 30<sup>th</sup> November evening.
- Fishermen out at sea are advised to return to coast.
- The ships plying over the area need to be regulated.
- People should stay in safe places during 30<sup>th</sup> morning to evening.
- Check for traffic congestion on your route before leaving for your destination.
- Follow any traffic advisories that are issued in this regard.
- Avoid going to areas that face the water logging problems often.
- Special care may be taken for fishing ponds and poultry over coastal areas.
- Avoid staying in vulnerable structure.

**(viii) Agromet advisories [over coastal districts of Tamil Nadu – Puducherry and adjoining south Andhra Pradesh]**

Provide adequate drainage facilities for the removal of excess water from rice, cotton, sugarcane, turmeric and vegetable fields, coconut and banana orchards. Provide mechanical support to banana plants to prevent lodging.

- Make arrangements to drain out excess water from the standing crop fields and fruit orchards in Kerala and Coastal Andhra Pradesh.
- Harvest the matured crops and keep it in safe place.
- Provide mechanical support to horticultural crops and staking to vegetables.

*All associated graphics have been kept in Annexure-I.*

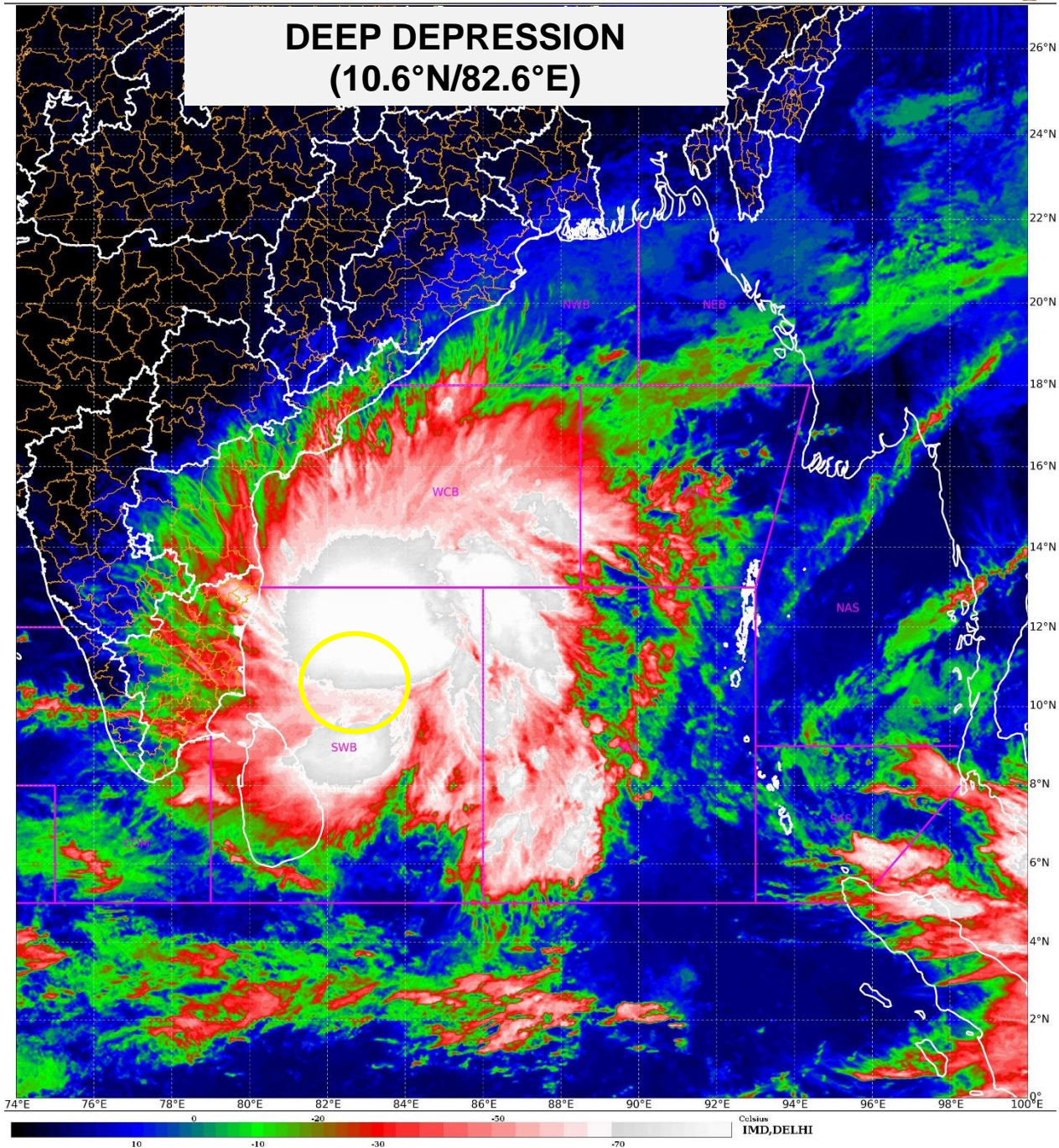
*Next Press Release will be issued at 1430 hours IST of tomorrow, the 30th November, 2024.*

**Contact: Cyclone Warning Division, Office of the Director General of Meteorology, India Meteorological Department, Ministry of Earth Sciences, E-mail: [cyclonewarningdivision@gmail.com](mailto:cyclonewarningdivision@gmail.com), Website: [rsmcnewdelhi.imd.gov.in](http://rsmcnewdelhi.imd.gov.in), Spatial rainfall distribution: Isolated: <25%, A few: 26-50%, Many: 51-75%, Most: 76-100%, Rainfall amount (mm): Heavy rain: 64.5 – 115.5, Very heavy rain: 115.6 – 204.4, Extremely heavy rain: 204.5 or more.**



SAT : INSAT-3DR IMG  
IMG\_TIR1\_TEMP 10.8 um  
LIC Mercator

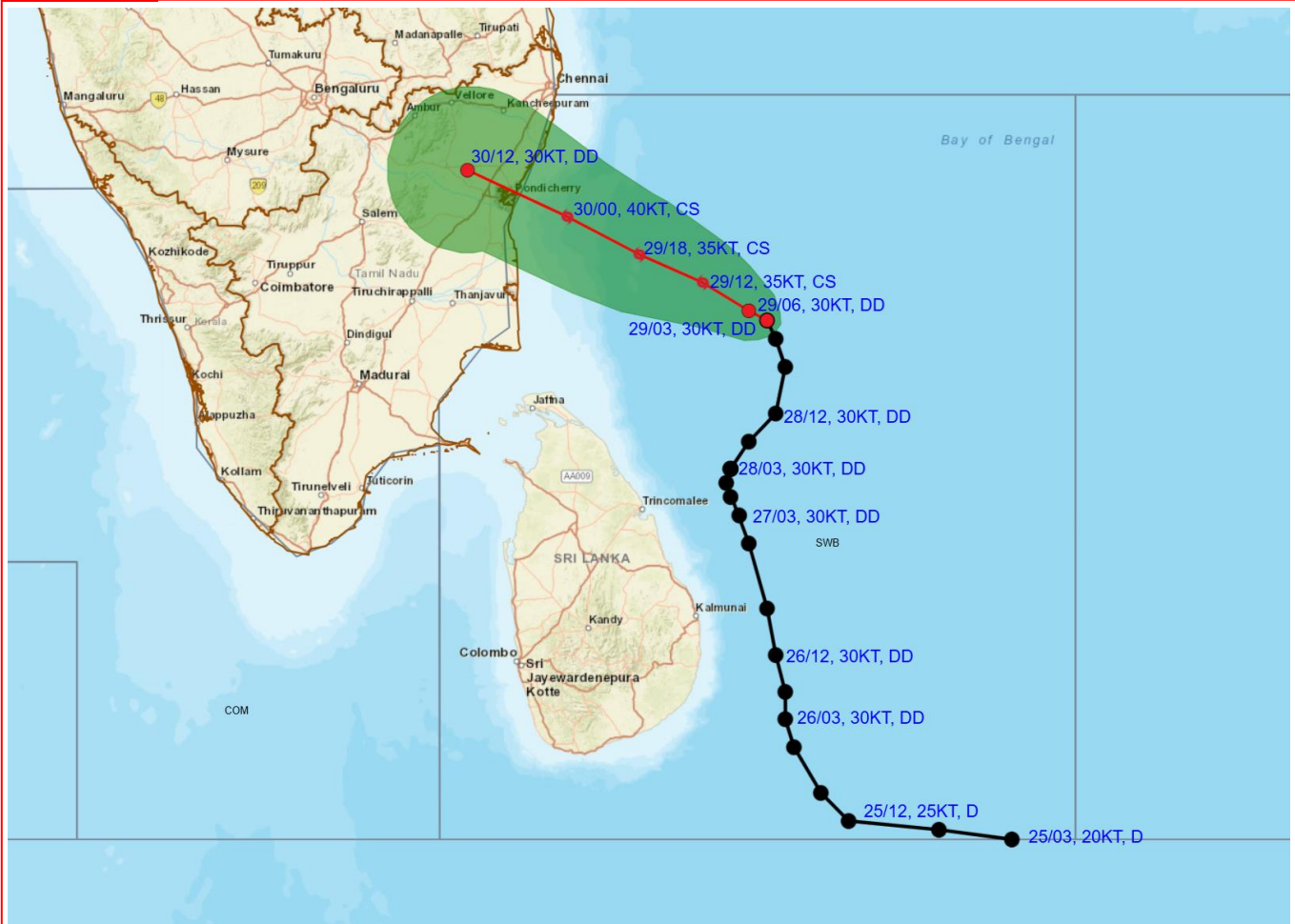
29-11-2024/(0615 to 0642) GMT  
29-11-2024/(1145 to 1212) IST



Contact: Cyclone Warning Division, Office of the Director General of Meteorology, India Meteorological Department, Ministry of Earth Sciences, E-mail: cyclonewarningdivision@gmail.com, Website: [rsmcnewdelhi.imd.gov.in](http://rsmcnewdelhi.imd.gov.in), Spatial rainfall distribution: Isolated: <25%, A few: 26-50%, Many: 51-75%, Most: 76-100%, Rainfall amount (mm): Heavy rain: 64.5 – 115.5, Very heavy rain: 115.6 – 204.4, Extremely heavy rain: 204.5 or more.



**OBSERVED AND FORECAST TRACK ALONG WITH CONE OF UNCERTAINTY OF DEEP DEPRESSION OVER SOUTHWEST BAY OF BENGAL BASED ON 0300 UTC (0830 HRS. IST) OF 29<sup>TH</sup> NOVEMBER, 2024**



DATE/TIME : IN UTC  
 IST : UTC + 0530  
 KT : NAUTICAL MILE S/HOUR = 1.85 KM/HOUR  
 LPA : LOW PRESSURE AREA  
 WML : WELL MARKED LOW PRESSURE AREA  
 D : DEPRESSION (17-27 KT)  
 DD : DEEP DEPRESSION (28-33 KT)  
 CS : CYCLONIC STORM (34-47 KT)  
 SCS : SEVERE CYCLONIC STORM (48-63 KT)  
 VSCS : VERY SEVERE CYCLONIC STORM (64-89 KT)  
 ESCS : EXTREMELY SEVERE CYCLONIC STORM (90-119 KT)  
 SuCS : SUPER CYCLONIC STORM ( $\geq 120$  KT)

● LESS THAN 34 KT  
 ○ 34-47 KT  
 ⊗  $\geq 48$  KT  
 — OBSERVED TRACK  
 — FORECAST TRACK  
 ▲ CONE OF UNCERTAINTY

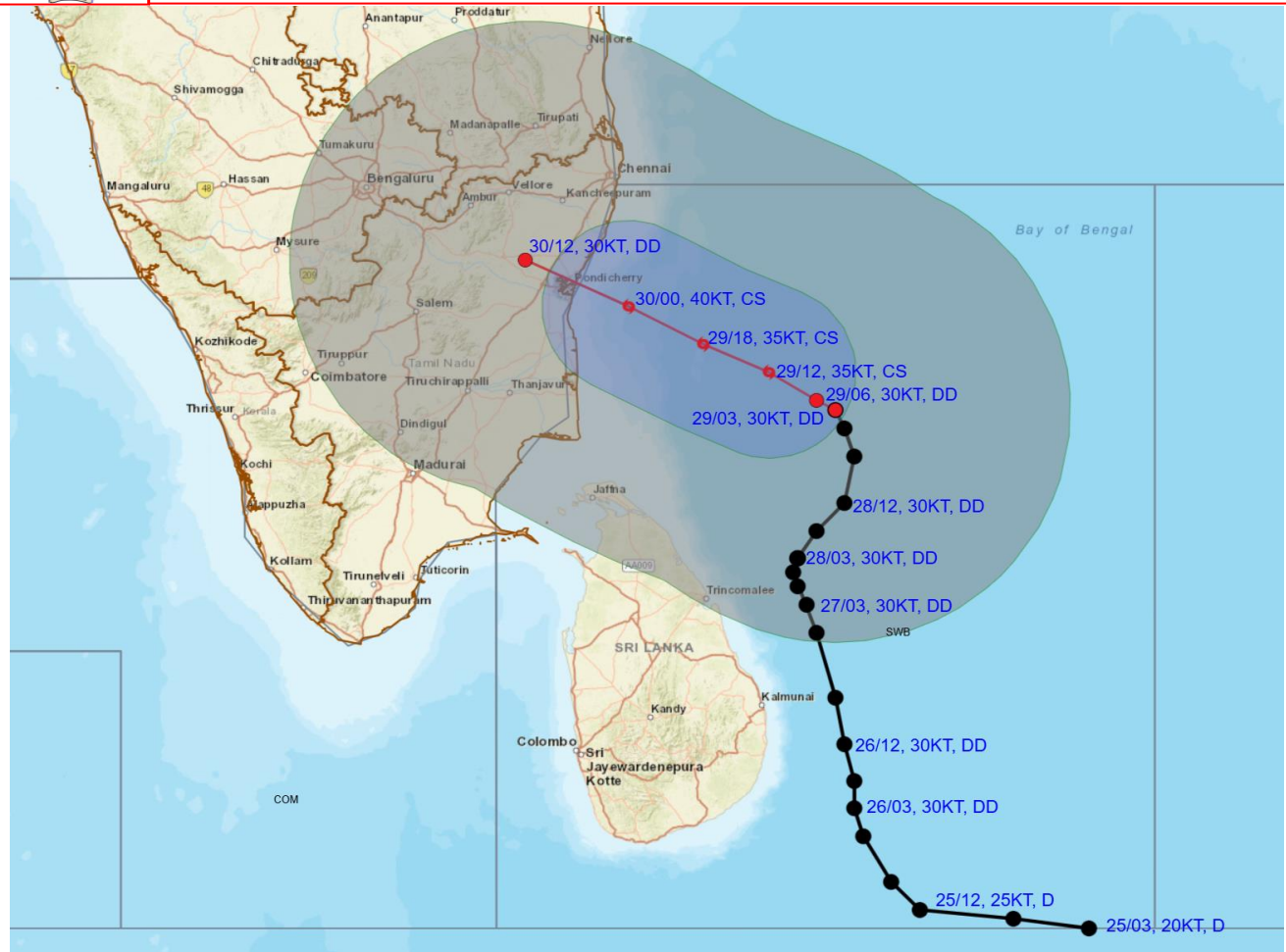
Forecast	DISTANCE (KM) AND DIRECTION FROM STATIONS				
Date and Time (UTC)	TRINCOMALEE	BATTICALOA	NAGAPPATTINAM	PUDUCHERRY	CHENNAI/MINAMBAKKAM
29.11.24/0300	270, NNE	340, NNE	300, E	340, ESE	380, SE
30.11.24/0000	360, NNW	470, NNW	120, NNE	70, ESE	150, S

Contact: Cyclone Warning Division, Office of the Director General of Meteorology, India Meteorological Department, Ministry of Earth Sciences, E-mail: cyclonewarningdivision@gmail.com, Website: [rsmcnewdelhi.imd.gov.in](http://rsmcnewdelhi.imd.gov.in), Spatial rainfall distribution: Isolated: <25%, A few: 26-50%, Many: 51-75%, Most: 76-100%, Rainfall amount (mm): Heavy rain: 64.5 – 115.5, Very heavy rain: 115.6 – 204.4, Extremely heavy rain: 204.5 or more.





**OBSERVED AND FORECAST TRACK ALONGWITH QUADRANT WIND DISTRIBUTION OF DEEP DEPRESSION OVER SOUTHWEST BAY OF BENGAL BASED ON 0300 UTC (0830 HRS. IST) OF 29<sup>TH</sup> NOVEMBER, 2024.**



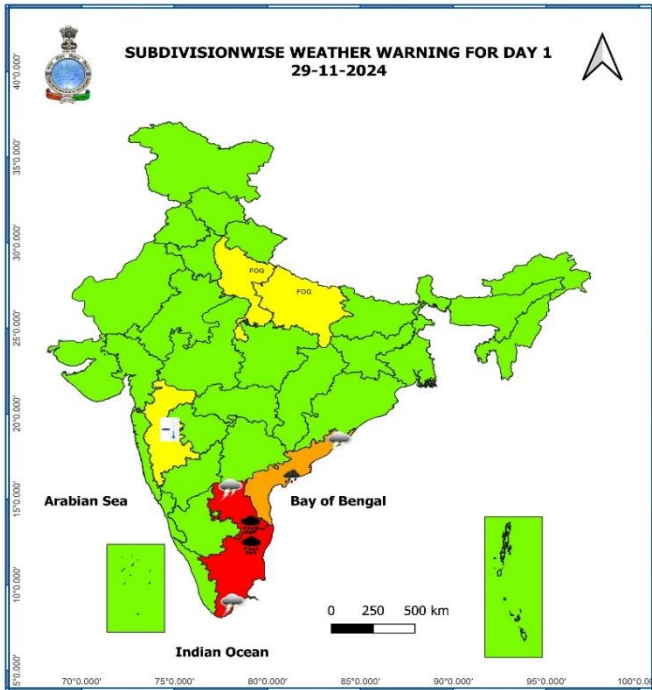
DATE/TIME : IN UTC  
 IST : UTC + 0530  
 KT : NAUTICAL MILE S/HOUR = 1.85 KM/HOUR  
 LPA : LOW PRESSURE AREA  
 WML : WELL MARKED LOW PRESSURE AREA  
 D : DEPRESSION (17-27 KT)  
 DD : DEEP DEPRESSION (28-33 KT)  
 CS : CYCLONIC STORM (34-47 KT)  
 SCS : SEVERE CYCLONIC STORM (48-63 KT)  
 VSCS : VERY SEVERE CYCLONIC STORM (64-89 KT)  
 ESCS : EXTREMELY SEVERE CYCLONIC STORM (90-119 KT)  
 SuCS : SUPER CYCLONIC STORM (≥120 KT)

● LESS THAN 34 KT  
 ○ 34-47 KT  
 ○ ≥ 48 KT  
 — OBSERVED TRACK  
 — FORECAST TRACK  
 ○ CONE OF UNCERTAINTY  
**AREA OF MAXIMUM SUSTAINED WIND SPEED:**  
 ■ 28-33 KT (52-61 KMPH)  
 ■ 34-49 KT (62-91 KMPH)  
 ■ 50-63 KT (92-117 KMPH)  
 ■ ≥ 64 KT (≥118 KMPH)

**IMPACT OVER THE SEA**

MSW (knot/kmph)	Impact	Action
28-33 (52-61)	Very rough seas	Total suspension of fishing operations
34-49 (62-91)	High to very high seas	Total suspension of fishing operations
50-63 (92-117)	Very high seas	Total suspension of fishing operations
≥ 64 (≥118)	Phenomenal	Total suspension of fishing operations

Contact: Cyclone Warning Division, Office of the Director General of Meteorology, India Meteorological Department, Ministry of Earth Sciences, E-mail: cyclonewarningdivision@gmail.com, Website: [rsmcnewdelhi.imd.gov.in](http://rsmcnewdelhi.imd.gov.in), Spatial rainfall distribution: Isolated: <25%, A few: 26-50%, Many: 51-75%, Most: 76-100%, Rainfall amount (mm): Heavy rain: 64.5 – 115.5, Very heavy rain: 115.6 – 204.4, Extremely heavy rain: 204.5 or more.



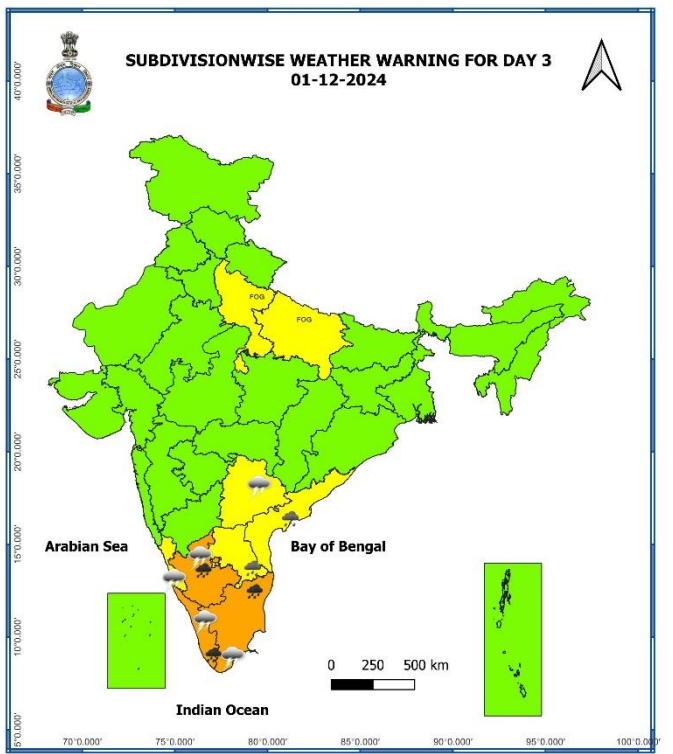
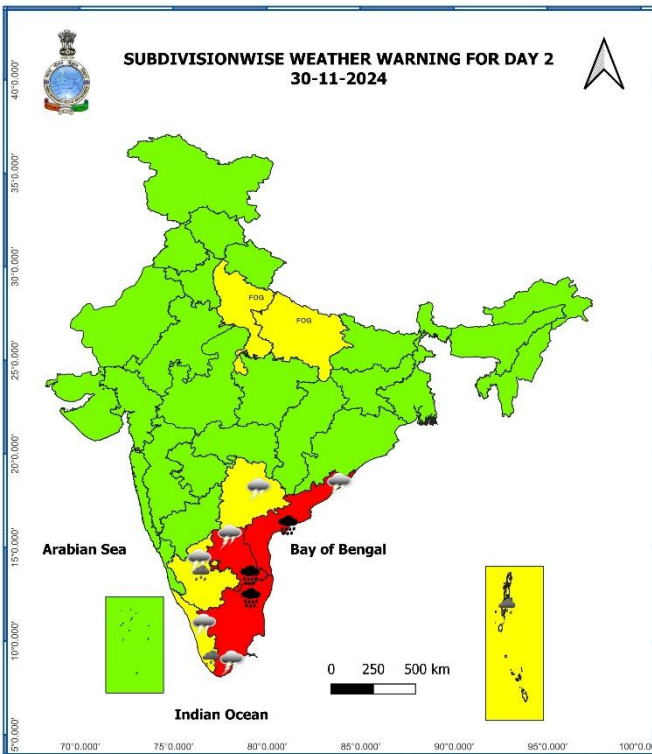
- Fog
- Heavy Rain
- Very Heavy Rain
- Extremely Heavy Rain
- Thunder & Lightning
- Hailstorm
- Dust Raising Winds
- Heavy Snow
- Dust Storm
- Heat Wave
- Warm Night
- Hot Day
- Hot & Humid
- Cold Wave
- Cold Day
- Ground Frost
- Strong Surface Winds

**COLOUR CODED WARNING**

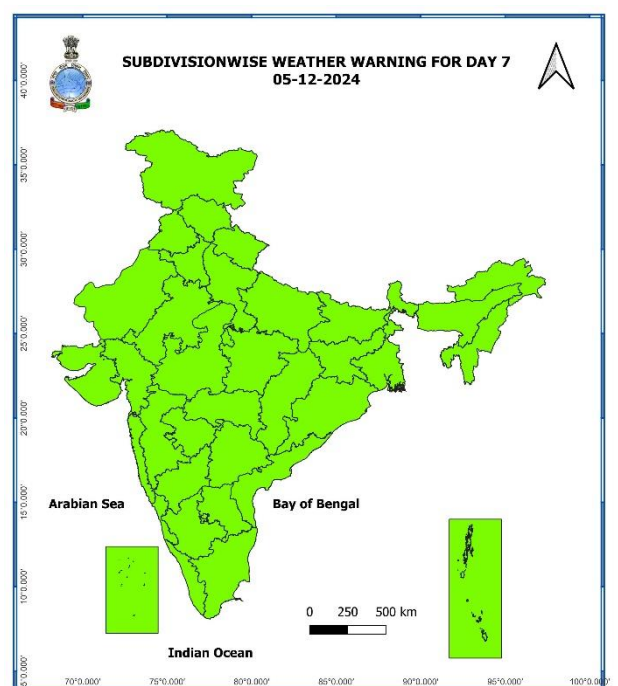
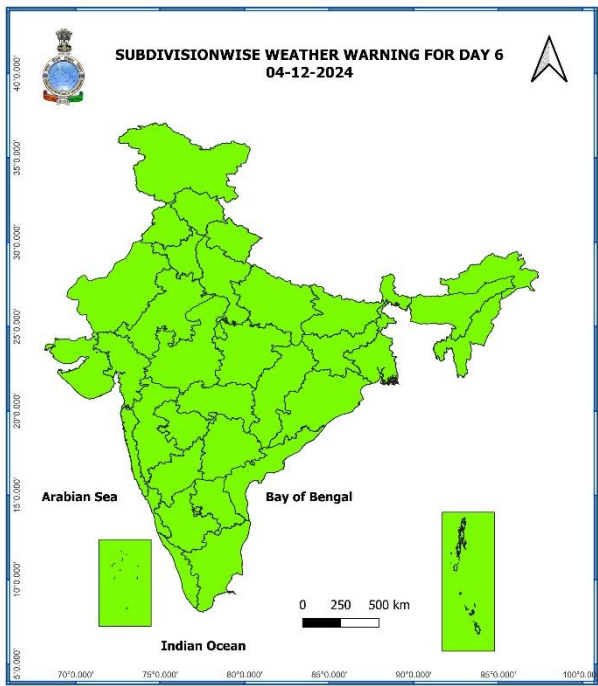
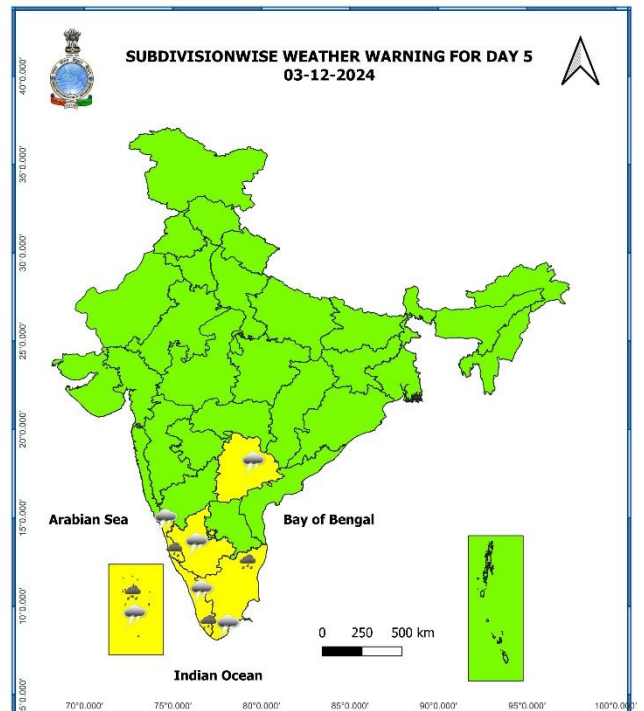
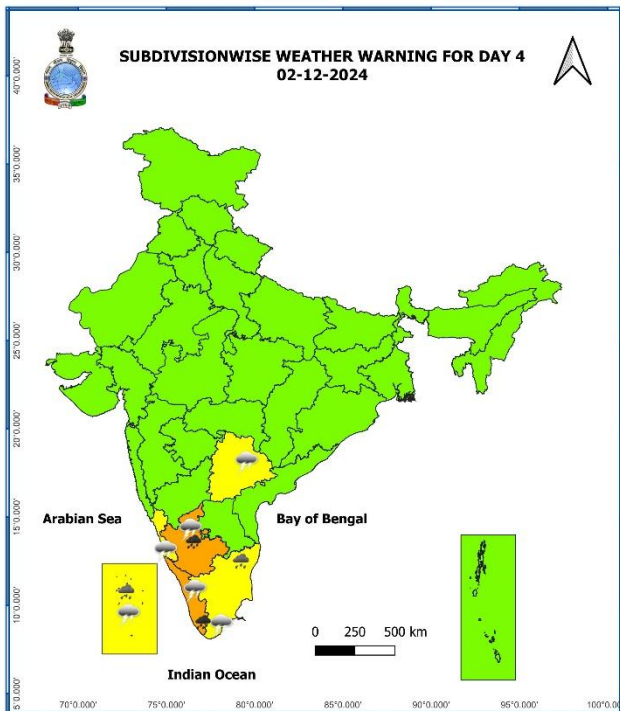
- No Warning (No Action)
- Watch (Be Aware)
- Alert (Be Prepared To Take Action)
- Warning (Take Action)

**Probabilistic Forecast**

Terms	Probability of Occurrence (%)
Unlikely	< 25
Likely	25 - 50
Very Likely	50 - 75
Most Likely	> 75



**Contact:** Cyclone Warning Division, Office of the Director General of Meteorology, India Meteorological Department, Ministry of Earth Sciences, E-mail: [cyclonewarningdivision@gmail.com](mailto:cyclonewarningdivision@gmail.com), Website: [rsmcnewdelhi.imd.gov.in](http://rsmcnewdelhi.imd.gov.in), Spatial rainfall distribution: Isolated: <25%, A few: 26-50%, Many: 51-75%, Most: 76-100%, Rainfall amount (mm): Heavy rain: 64.5 – 115.5, Very heavy rain: 115.6 – 204.4, Extremely heavy rain: 204.5 or more.

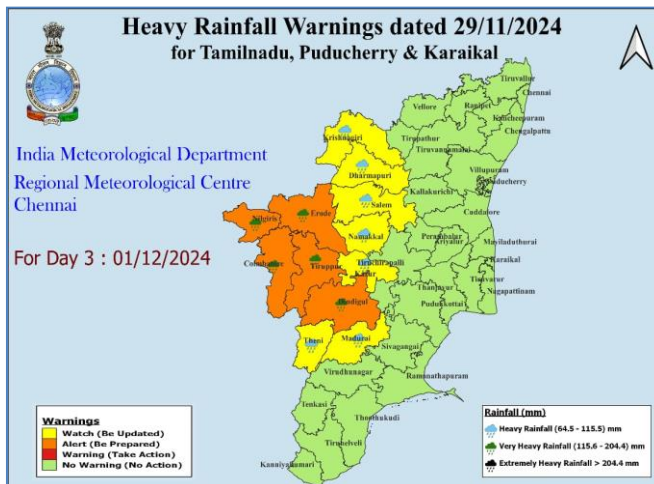
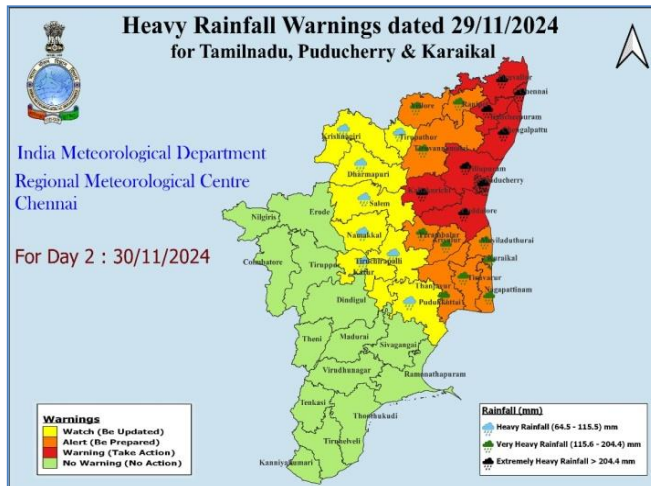
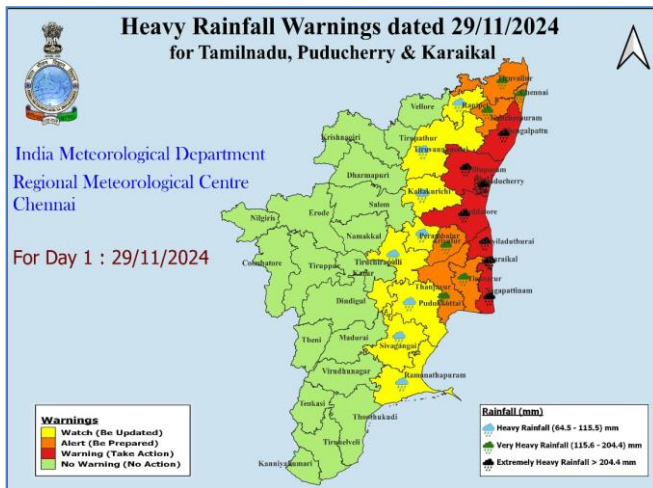


- Action may be taken based on **ORANGE AND RED** COLOUR warnings.
- Vulnerable regions likely urban and hilly areas action may be initiated for heavy rainfall warning.
- As the lead period increases forecast accuracy decreases.

Contact: Cyclone Warning Division, Office of the Director General of Meteorology, India Meteorological Department, Ministry of Earth Sciences, E-mail: [cyclonewarningdivision@gmail.com](mailto:cyclonewarningdivision@gmail.com), Website: [rsmcnewdelhi.imd.gov.in](http://rsmcnewdelhi.imd.gov.in), Spatial rainfall distribution: Isolated: <25%, A few: 26-50%, Many: 51-75%, Most: 76-100%, Rainfall amount (mm): Heavy rain: 64.5 – 115.5, Very heavy rain: 115.6 – 204.4, Extremely heavy rain: 204.5 or more.



## District-Wise Warning Graphics of Tamil Nadu & Puducherry



Contact: Cyclone Warning Division, Office of the Director General of Meteorology, India Meteorological Department, Ministry of Earth Sciences, E-mail: [cyclonewarningdivision@gmail.com](mailto:cyclonewarningdivision@gmail.com), Website: [rsmcnewdelhi.imd.gov.in](http://rsmcnewdelhi.imd.gov.in), Spatial rainfall distribution: Isolated: <25%, A few: 26-50%, Many: 51-75%, Most: 76-100%, Rainfall amount (mm): Heavy rain: 64.5 – 115.5, Very heavy rain: 115.6 – 204.4, Extremely heavy rain: 204.5 or more.

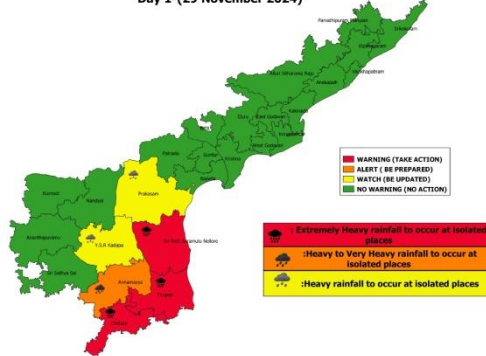
# District-Wise Warning Graphics of Andhra Pradesh



**Rainfall warnings for Andhra Pradesh and Yanam.**  
Valid from 1300 hrs IST of 29.11.2024 to 0830 hrs IST of 30.11.2024

Date of Issue:- 29 November 2024

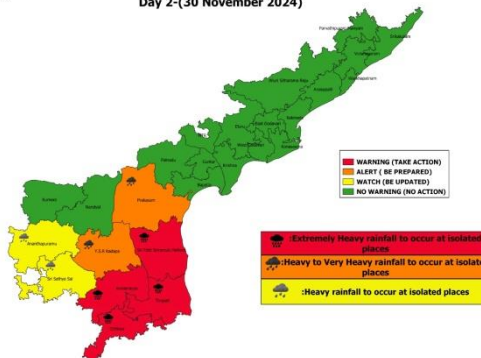
Day 1-(29 November 2024)



**Rainfall warnings for Andhra Pradesh and Yanam.**  
Valid from 0830 hrs IST of 30.11.2024 to 0830 hrs IST of 01.12.2024

Date of Issue:- 29 November 2024

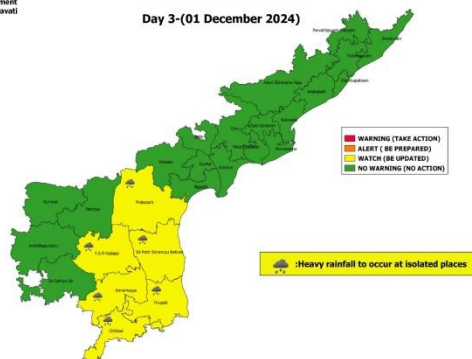
Day 2-(30 November 2024)



**Rainfall warnings for Andhra Pradesh and Yanam.**  
Valid from 0830 hrs IST of 01.12.2024 to 0830 hrs IST of 02.12.2024

Date of Issue:- 29 November 2024

Day 3-(01 December 2024)



Contact: Cyclone Warning Division, Office of the Director General of Meteorology, India Meteorological Department, Ministry of Earth Sciences, E-mail: [cyclonewarningdivision@gmail.com](mailto:cyclonewarningdivision@gmail.com), Website: [rsmcnewdelhi.imd.gov.in](http://rsmcnewdelhi.imd.gov.in), Spatial rainfall distribution: Isolated: <25%, A few: 26-50%, Many: 51-75%, Most: 76-100%, Rainfall amount (mm): Heavy rain: 64.5 – 115.5, Very heavy rain: 115.6 – 204.4, Extremely heavy rain: 204.5 or more.

## Flash Flood Guidance

### **24 hours Outlook for the Flash Flood Risk (FFR) till 1130 IST of 30-11-2024:**

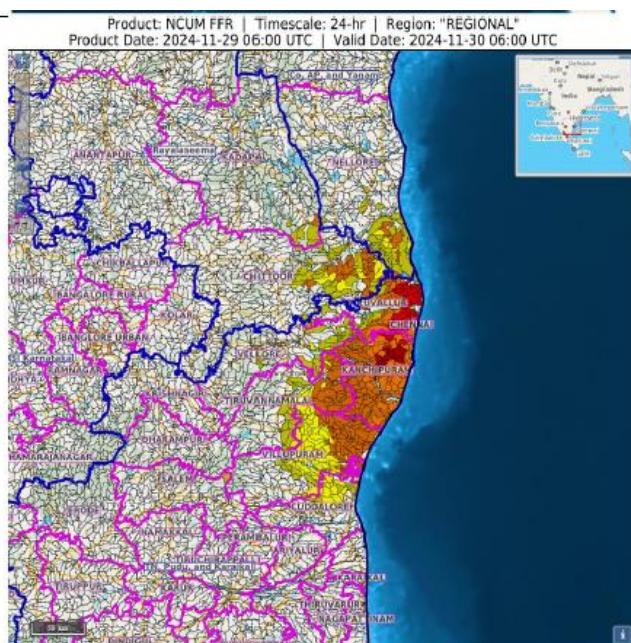
**Moderate to high flash flood risk** likely over few watersheds & neighbourhoods of following Meteorological subdivision in next 24 hours.

**Coastal Andhra Pradesh** – Thirupati and Nellore district

**Rayalaseema** – Chittoor, Annamaya and Kadapa district

**Tamil Nadu, Puducherry & Karaikal** - Chennai, Kanchipuram, Vellupuram, Cuddalore, Vellore, Tiruvannamalai and Tiruvallur districts.

Surface runoff/ Inundation may occur at some fully saturated soils & low-lying areas over Area of Concern as shown in map due to expected rainfall occurrence in next 24 hours.



#### Flash Flood Risk

**High Risk (Take Action)**

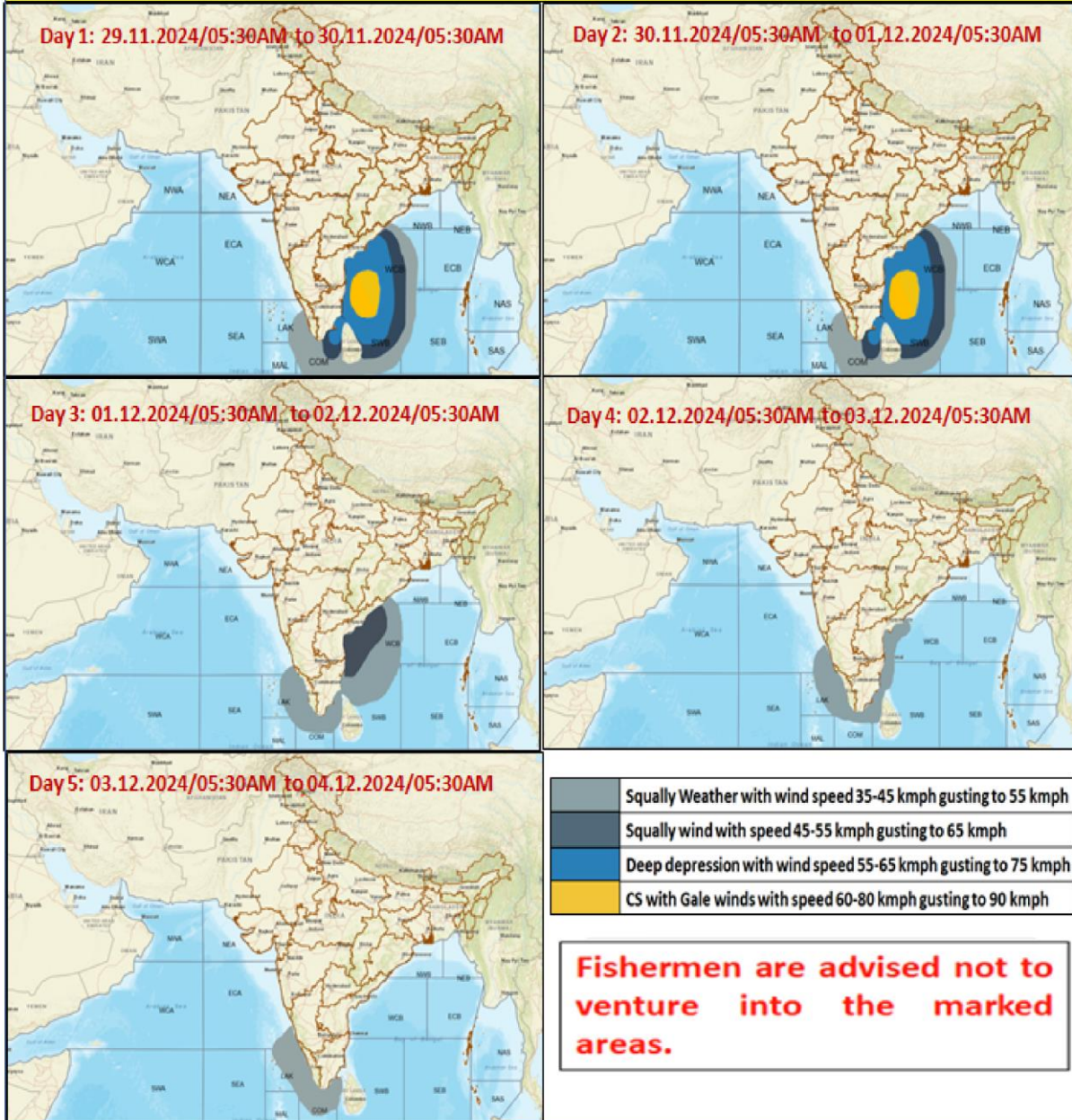
**Moderate Risk (Be Prepared)**

**Low Risk (Be Updated)**

Contact: Cyclone Warning Division, Office of the Director General of Meteorology, India Meteorological Department, Ministry of Earth Sciences, E-mail: [cyclonewarningdivision@gmail.com](mailto:cyclonewarningdivision@gmail.com), Website: [rsmcnewdelhi.imd.gov.in](http://rsmcnewdelhi.imd.gov.in), Spatial rainfall distribution: Isolated: <25%, A few: 26-50%, Many: 51-75%, Most: 76-100%, Rainfall amount (mm): Heavy rain: 64.5 – 115.5, Very heavy rain: 115.6 – 204.4, Extremely heavy rain: 204.5 or more.



### Fishermen Warning Graphics



Contact: Cyclone Warning Division, Office of the Director General of Meteorology, India Meteorological Department, Ministry of Earth Sciences, E-mail: [cyclonewarningdivision@gmail.com](mailto:cyclonewarningdivision@gmail.com), Website: [rsmcnewdelhi.imd.gov.in](http://rsmcnewdelhi.imd.gov.in), Spatial rainfall distribution: Isolated: <25%, A few: 26-50%, Many: 51-75%, Most: 76-100%, Rainfall amount (mm): Heavy rain: 64.5 – 115.5, Very heavy rain: 115.6 – 204.4, Extremely heavy rain: 204.5 or more.